

THE GROWTH HAVEN REVIVING THE HISTORICAL SABILS OF CAIRO

YEAR 2021
LOCATION CAIRO, EGYPT
COURSE MSACT, ARCH 701B
INSTRUCTOR PROF. PABLO LORENZO-EIROA

THROUGH RESEARCH OF THE HUMANIST AND RELIGIOUS ASPECTS OF ISLAM, IN WHICH ACCESS TO WATER IN DESERTS IS CURRENTLY PARALLELED TO ACCESS TO KNOWLEDGE IN THE FORM OF PUBLIC LIBRARIES.

FOLLOWING BORGES' "LIBRARY OF BABEL" AS A READING REFERENCE, THIS CULTURAL HERITAGE PROJECT HAS BEEN INTEGRATING HUMAN NECESSITY TO NOURISH THE BODY IN THE ARID AREAS WITH WATER, WITH THE NOURISHING OF THE INTELLECT AND ACCESS TO KNOWLEDGE.

CONTEMPLATING ALTERNATIVE EXPANSIVE REAL TIME EMERGENT VIRTUAL SPACES BY RETRIEVING PHYSICAL BOOKS 3D SCANNED FROM EXISTING PHYSICAL LIBRARIES, THROUGH API DATA GATHERING AND UNSUPERVISED MACHINE LEARNING, USERS ENTER A VIRTUAL WORLD WHERE BOOKS ARE WRITTEN BY THE AID OF GPT-2 MODEL INFORMED BY PREVIOUS USERS, CONTRIBUTING THEIR OWN TEXT CREATING AN ENDLESS EVERGROWING LIBRARY.

WATER IS AN ESSENTIAL ELEMENT OF LIFE AND AN INTEGRAL PART OF ISLAMIC BELIEFS. SABILS ARE ONE OF THE EMERGED ISLAMIC ARCHITECTURES UNDER THE RULE OF THE MAMLUKS IN EGYPT WHERE THEY ARE USUALLY ACCOMPANIED BY A KUTTAB ON THE UPPER FLOOR.



SABIL WA KUTTAB KEY:

- 01. ABDULRAHMAN KATHUDA (100007997, 31.2620511)
- 02. MOHAMED ALI PASHA (100007923, 31.2613831)
- 03. KHUJUSRAW PASHA (100008111, 31.2612411)
- 04. SOLIMAN AGHA (100028779, 31.2621001)



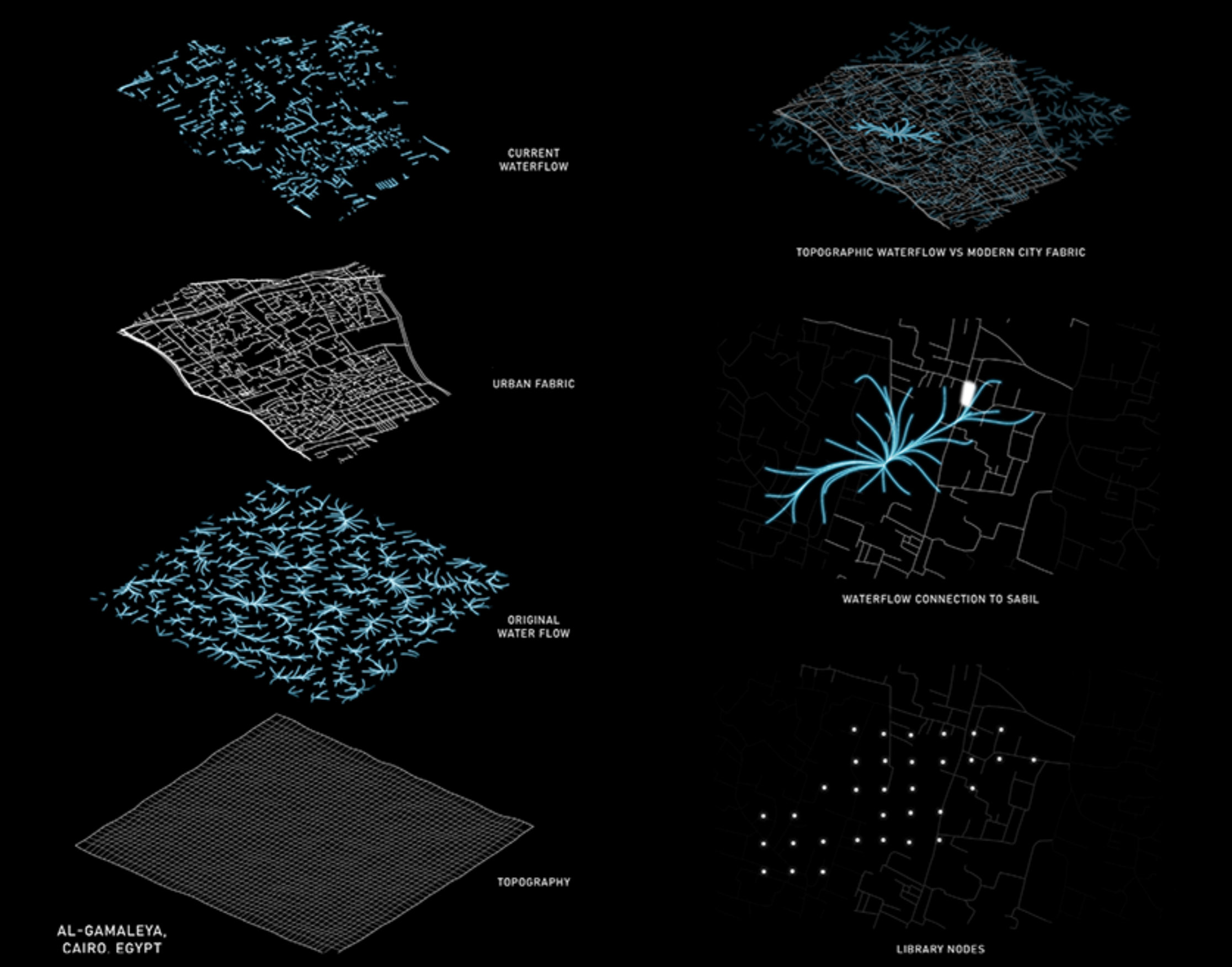
CAIREAN SABILS ANALYSIS



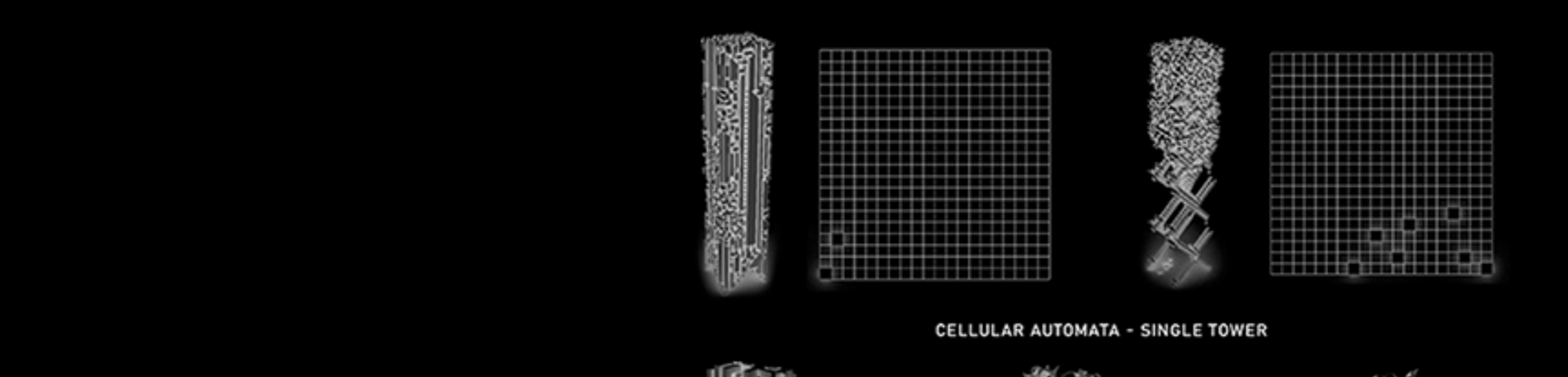
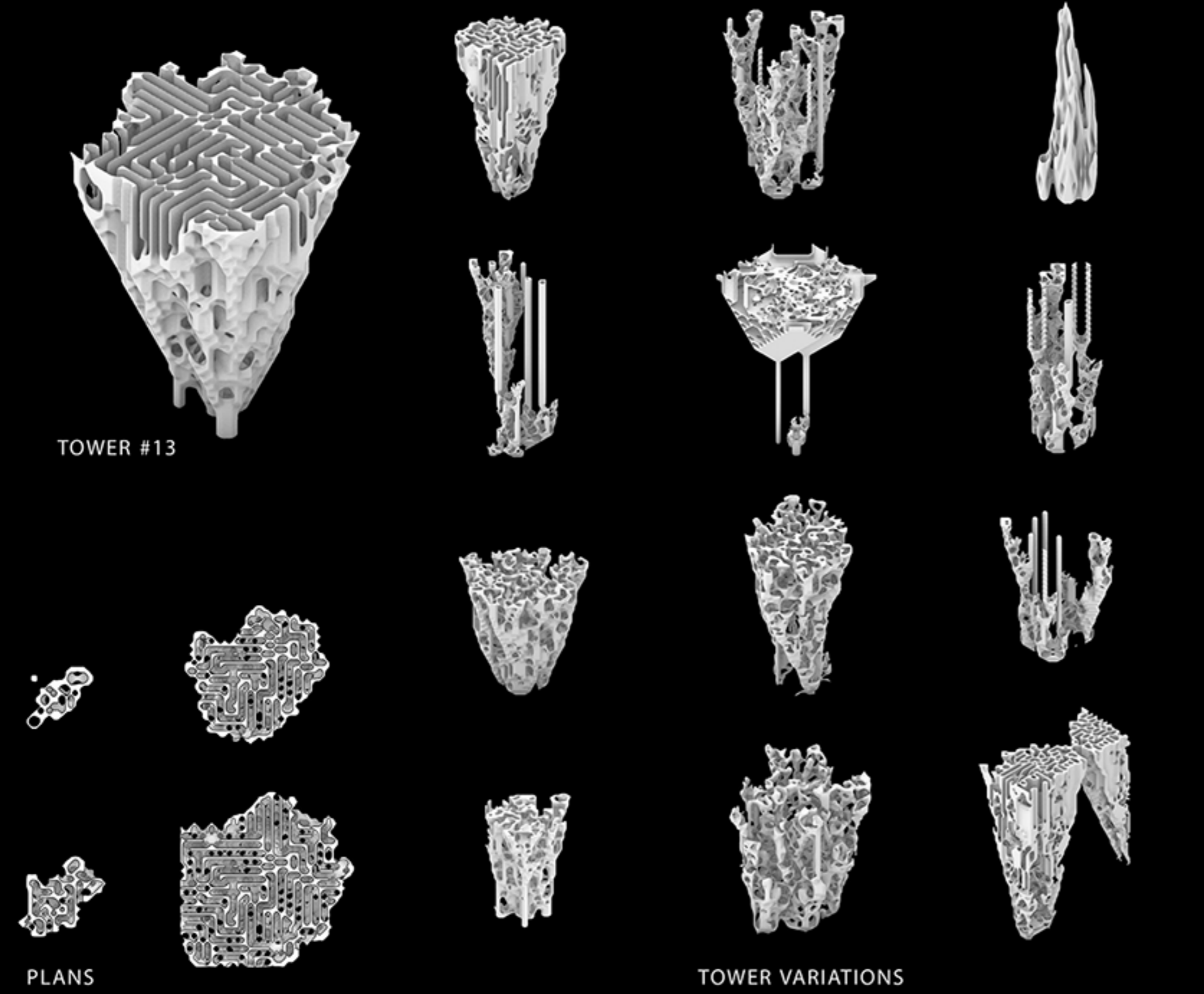
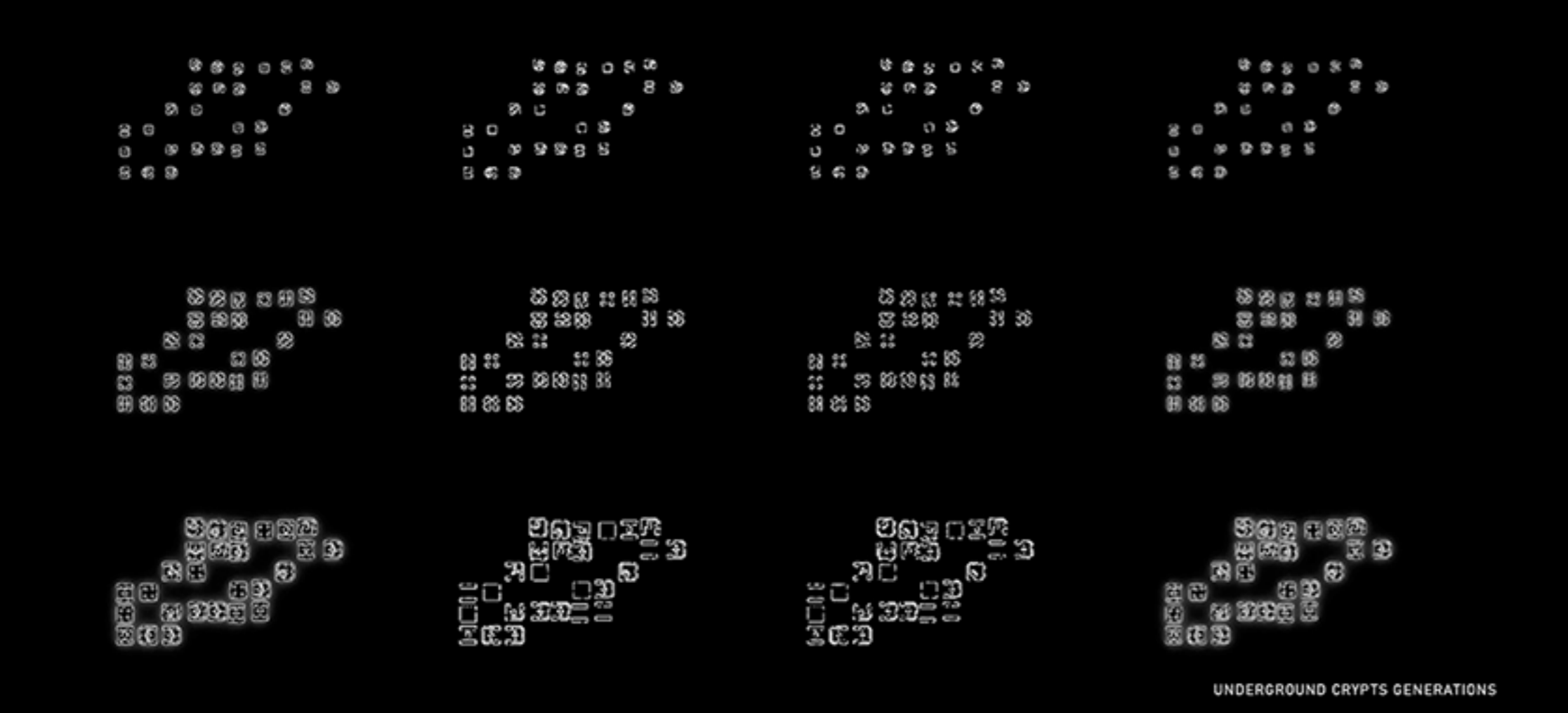
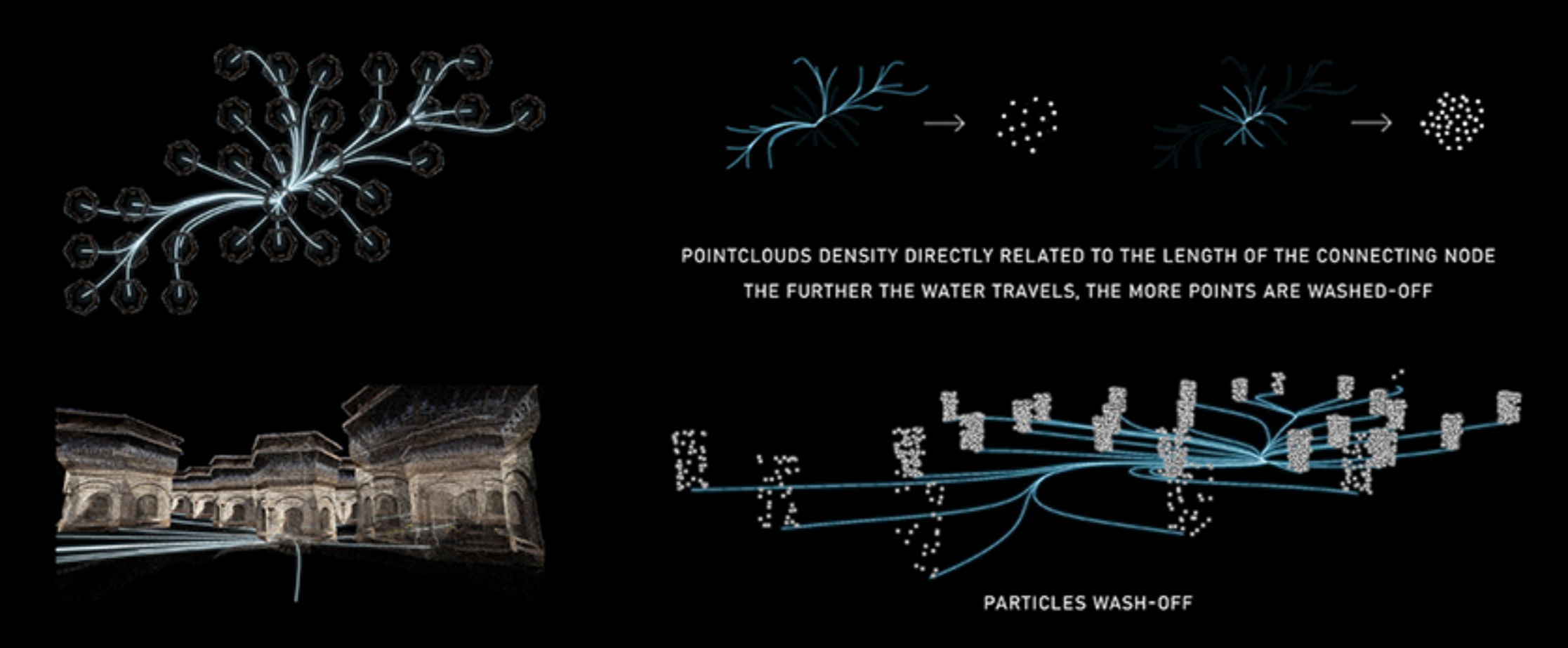
3D SCAN OF SABIL ABDULRAHMAN KATHUDA CAIRO, EGYPT



EXPLORING THE POSSIBILITIES OF 3D SCANS

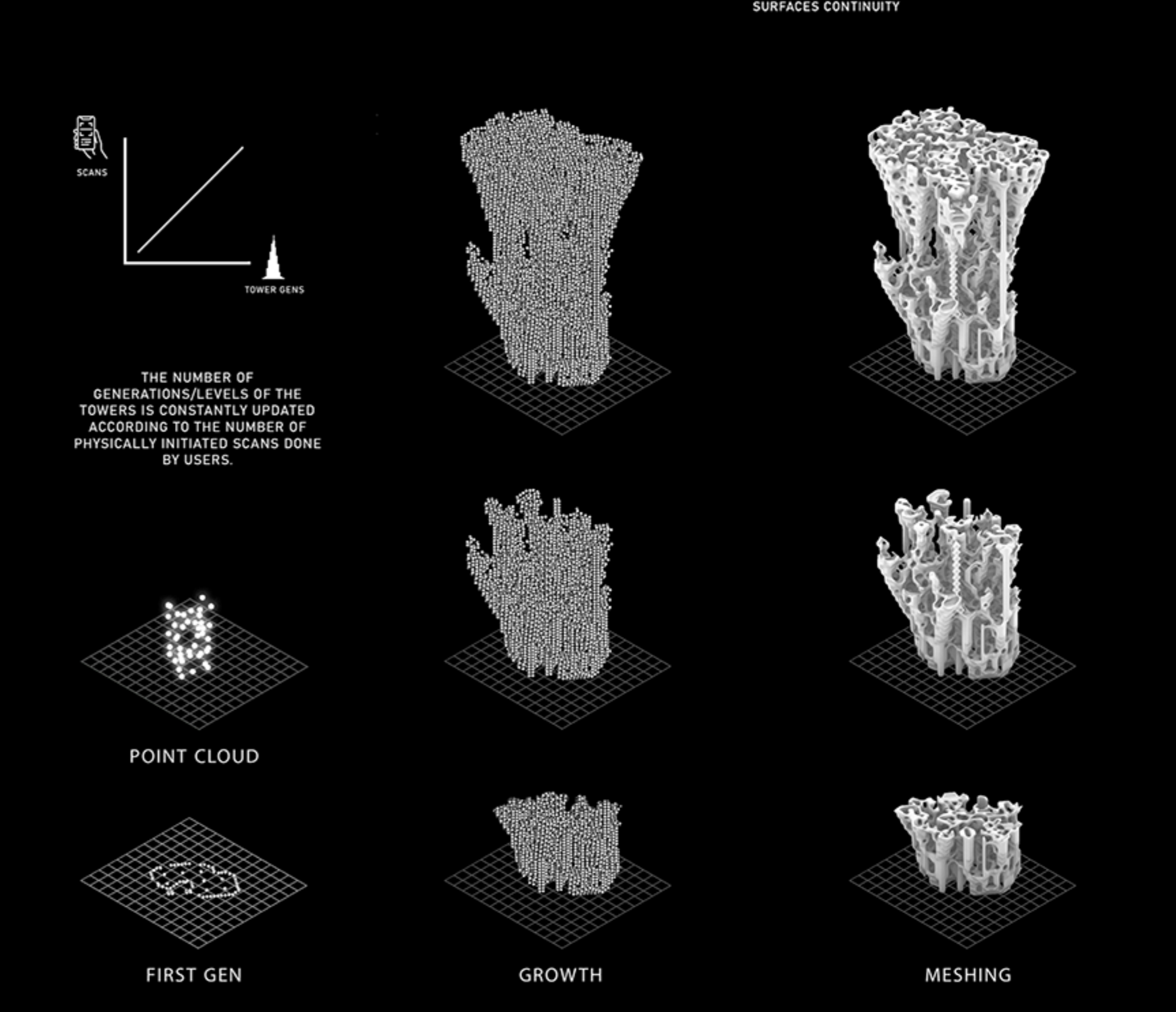


WATER SIMULATION RETRIEVING THE ORIGINAL TOPOGRAPHY OF THE LAND AND RUNNING WATER SIMULATIONS TO CREATE NODES FOR THE WATER TOWERS OUT OF THE NATURAL FLOW.



POINT CLOUD BASED CELLULAR AUTOMATA

TOWERS ARE GENERATED THROUGH CA COMPUTATIONAL ALGORITHMS ACCORDING TO DIFFERENT RULES FOLLOWING THEIR DIFFERENT LOCATIONS AND POINT CLOUD DENSITIES.



THE TOWERS ARE BEING DISMANTLED, WHILE THE REST OF THE CITY AND SEVERAL NEARBY TOWNS WILL BE EVACUATED ALONG ROUTES THAT ARE CONNECTED TO THE MAINLAND.

THE STATE MEDIA SAY THAT THE GOVERNMENT PLANS TO "BUILD AND REHABILITATE THE BUILDINGS FOR THE LONG-TERM RESIDENTS WHO WILL BE FORCED OUT BY THE TOWERS".

THE GOVERNMENT HAS NO IMMEDIATE PLANS TO CONSTRUCT A NEW TERMINAL IN CHINA WITH A TERMINAL, SINCE THERE, THE NATIONAL INFRASTRUCTURE BUREAU SAID IN ITS PRESS STATEMENT.

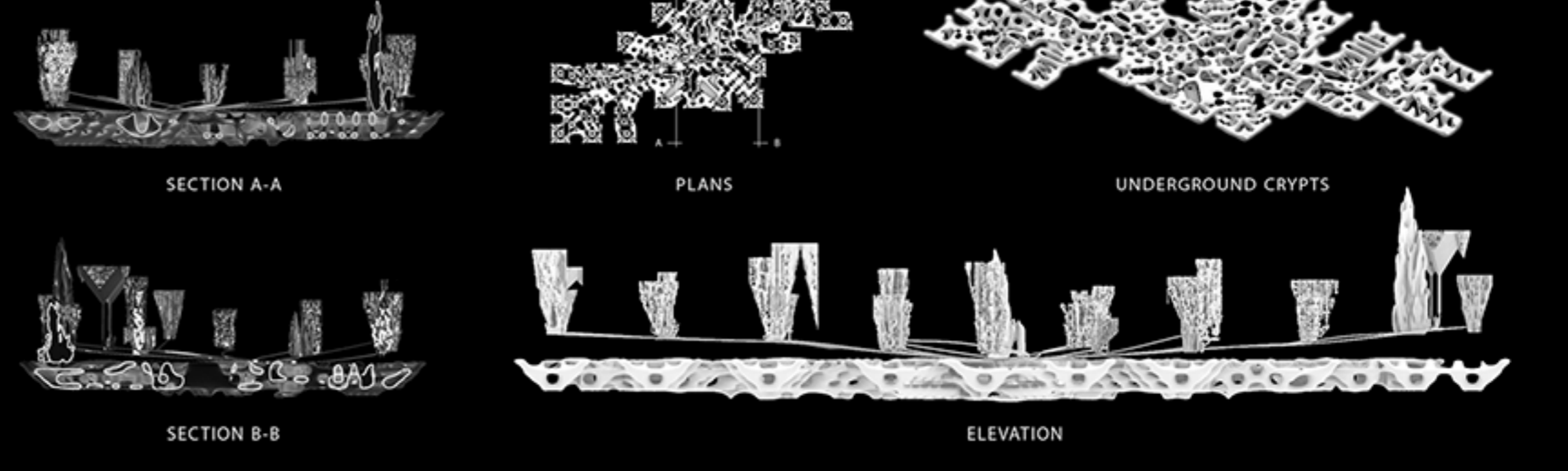
THE CHINA INTERNATIONAL TRADE ADMINISTRATION (CITA) SAID THAT, BASED ON RECENT SURVEY, IT "WOULD HAVE" NO IMMEDIATE PLAN TO CONVERT A NEW TERMINAL TO A LARGER ONE.

IT CITED ONGOING WORK TO RECONSTRUCT BEIJING'S HISTORIC DISTRICT OF HUI, WHICH WAS BUILT OVER THE COURSE OF CENTURIES AS A PART TO CREATE "A NEW CHINESE PORT FOR COMMERCIAL AND INDUSTRIAL PURPOSES".

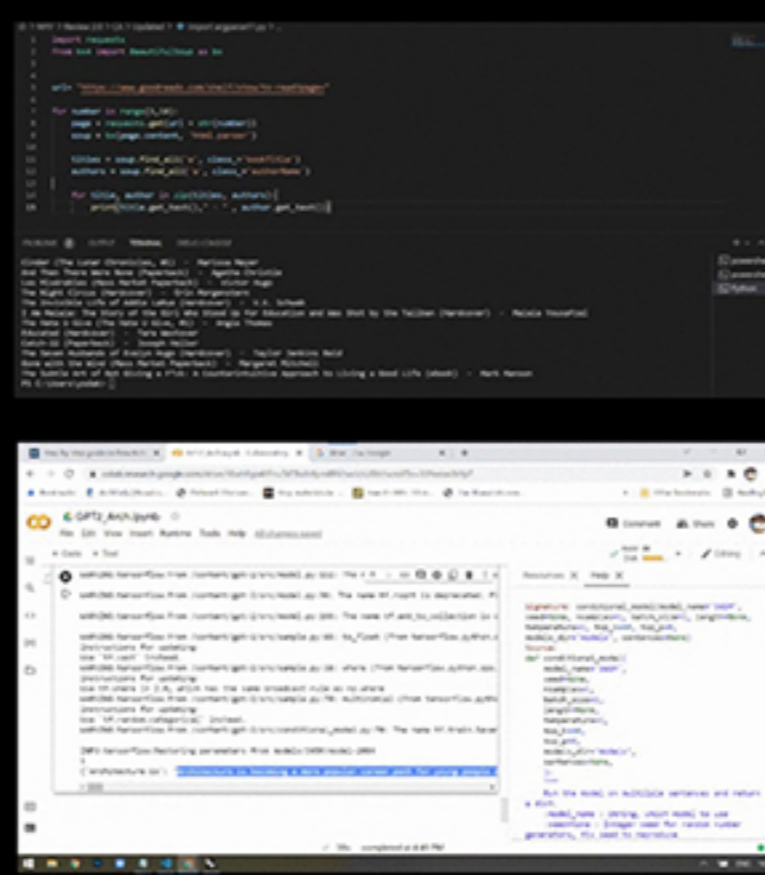
MEANWHILE, IT SAID, "THE GOVERNMENT WILL BEGIN WORK ON REBUILDING THE JINGJI WAI DISTRICT IN THE BEIJING FOUR MIDDLE" AFTER THREE DECADES OF "RECONSTRUCTION FOR ITS FUTURE COMMERCIAL, INDUSTRIAL AND RESIDENTIAL USES".

THE DEVELOPMENT WAS LED BY THE GOVERNMENT'S MINISTRY OF PEOPLES LIBERATION AFFAIRS, SINCE IS THE NATIONAL GOVERNMENT AGENCY RESPONSIBLE FOR THE DEVELOPMENT OF THE COUNTRY'S CITIES, SUPPORTS AND OTHER CRITICAL FACILITIES, AS WELL AS THE AUTHORITIES' STATE-OWNED SECTOR. THE CHINA INFRASTRUCTURE AND TECHNOLOGY COOPERATION BUREAU (CITCOBAC).

BY GPT-2 TEXT GENERATING API MODEL - OPENAI, UNSUPERVISED.



PYTHON CODING AND API FETCHING



UNITY VR WALKTHROUGH

