

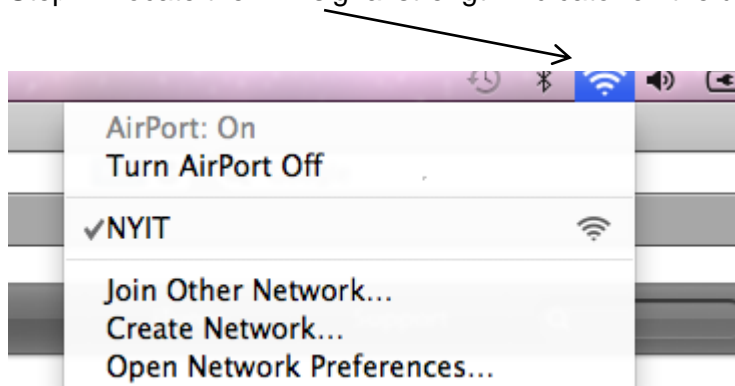
**Date issued:**

**Revised:**

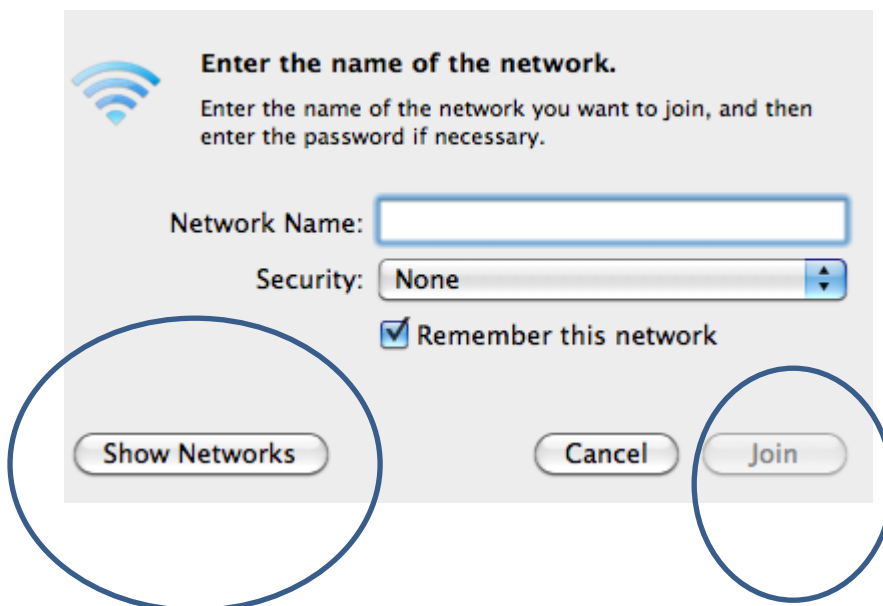
### Method and Procedure

## Objective: How do I connect to the NYIT Wi-Fi Network

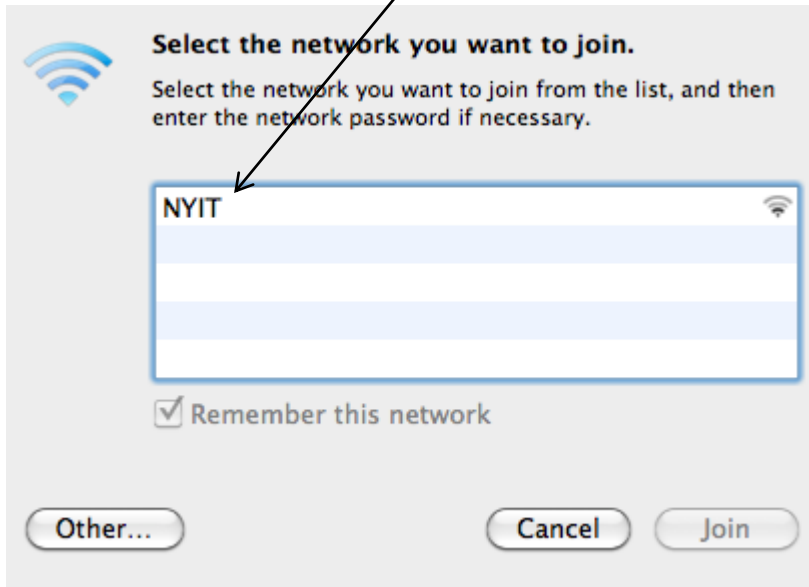
Step 1: Locate the Wifi signal strength indicator on the upper right hand of your screen.



Step 2: Join another network and click show networks



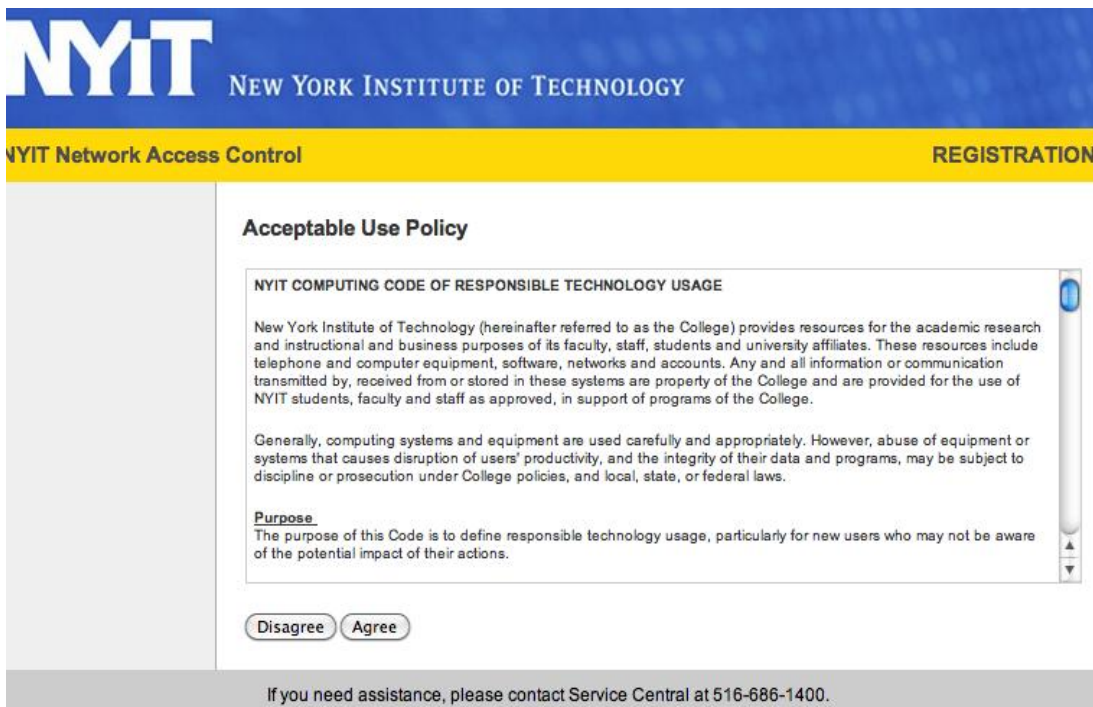
Step 3: Click on the NYIT Wi-Fi Network and select join.



Step 4: Open a browser Session and clear the browser Cache

Step 5: Navigate to any web page and the the NYIT Wi-Fi Authentication page will appear.

Choose Agree to access the Wi-Fi network.



**Step 6:** Step 5: Log in using your NYIT User name and Password

The screenshot shows the NYIT Network Access Control Registration page. At the top, there is a blue header with the NYIT logo and the text "NEW YORK INSTITUTE OF TECHNOLOGY". Below this is a yellow banner with "NYIT Network Access Control" on the left and "REGISTRATION" on the right. The main content area is white and contains the following text:

**Welcome**  
Each client is required to verify that their PC will meet established network policies prior to connecting to the network.  
You must already have an active account in order to register.

- If you know your username and password please fill out the form below and click the download button.
- If you do not know your username and password, please contact the Help Desk.

When you have filled out the form, you will be prompted to download and run the Client Security Agent to verify that your PC will meet these policies. The process will take approximately one to two minutes. Do not interrupt this process while it is running.

**Download**  
Please enter your username and password. Then click the button to download and run the Client Security Agent.

[Instructions](#)

The form contains two input fields: "User Name" and "Password", and a "Download" button.

**Step 7:** Step 6: Choose the applicable agent Student, Faculty and Staff.

The screenshot shows the NYIT Network Access Control Registration page. At the top, there is a blue header with the NYIT logo and the text "NEW YORK INSTITUTE OF TECHNOLOGY". Below this is a yellow banner with "NYIT Network Access Control" on the left and "REGISTRATION" on the right. The main content area is white and contains the following text:

**Welcome**  
To gain network access users are required to adhere to our established registration policies.  
Please select one of the following options:

**STUDENTS, FACULTY AND STAFF**  
[Students, Faculty and Staff who have a NYIT user name and password.](#)

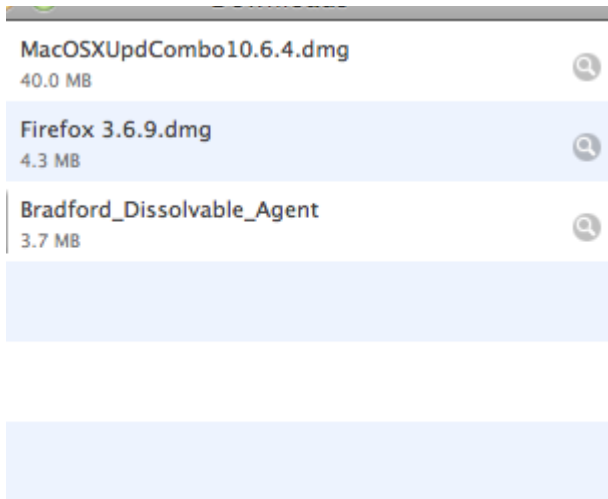
**GAMING DEVICES**  
[Register a wireless game console.](#)

**GUESTS WITH AN ACCOUNT**  
Contact Service Central at [Free call](#) for an account.  
[Guests who have a temporary account.](#)  
Call Service Central at [Free call](#) for an account.

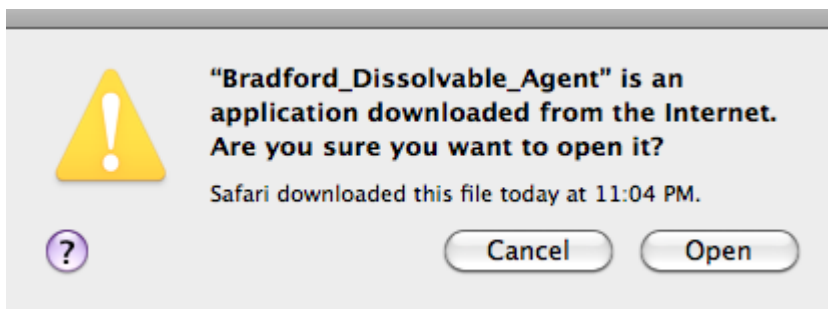
At the bottom of the page, there is a grey footer with the text: "If you need assistance, please contact Service Central at [Free call](#)."

The page also features three "START >>" buttons with icons of a person and a laptop, each corresponding to one of the registration options. The "STUDENTS, FACULTY AND STAFF" button is circled in blue.

Step 8: The Bradford Dissolvable Agent Will download.



Step 9: Allow Bradford Dissolvable Agent to open.



Step 10: The dissolvable agent will install and verify that your computer meets NYIT's standards  
The dissolvable agent will install and verify that your computer meets NYIT's standards

- Windows machines must be Windows XP or higher and have a virus scanner with recent definitions.
- Macs must be OSX 10.4 (Tiger) or higher
- All other devices (handhelds, tablets and game consoles) do not require the scan

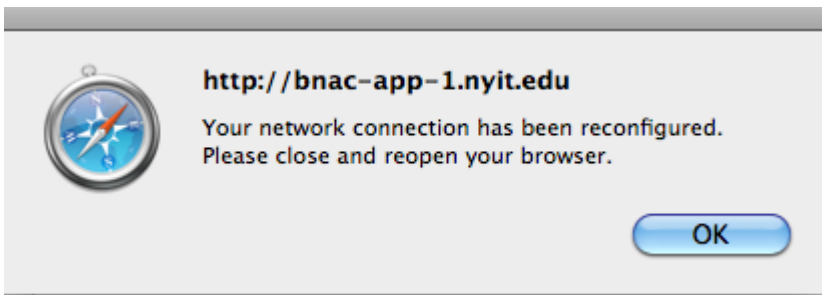
**Success**

You have successfully registered on the network.  
Please wait **81** seconds while your network connection is established.

Progress



Step 11: Successful network configuration. Close your browser, and restart your Mac to connect to the NYIT Wi-Fi Network



If you should experience any difficulties please call Service Central at 516.686.1400 or email us at [servicecentral@nyit.edu](mailto:servicecentral@nyit.edu).