

WELCOME

**Fall 2023
CPI DAY**

We will begin shortly



Fall 2023 CPI DAY

Research, Assessment and Decision Support (RADS)

August 30, 2023

Do.
Make.
Innovate.
Reinvent the Future.

Agenda

1. Welcome
2. CPI Implementation 2022-23
3. Revision of MSCHE Accreditation Standards & Guiding Principles
4. Using Data to Support the Student Experience & Inclusive Excellence
5. Coming up in AY 23/24
 - Know Your Students
 - Big Bold Challenge

Welcome

- President Hank Foley
- Provost & Executive Vice President Jerry Balentine
- Associate Provost Francesca Fiore



Continuous Program Improvement (CPI) & MSCHE Accreditation

CPI Implementation

CPI Process was created to meet MSCHE Standard V

MSCHE Standard V:

“Assessment of student learning and achievement demonstrates that the institution’s students have accomplished educational goals consistent with their program of study, degree level, the institution’s mission, and appropriate expectations for institutions of higher education.”

CPI Implementation Process

Academic Senate CPI Committee Defines the CPI Process for

- Improving educational effectiveness (student learning & achievement/success)
- Using data & evidence - informed decision making
- Applying Deming's scientific model of continuous improvement: **Plan, Do, Study, Act**

CPI Implementation

Progress

Deans, department chairs, program directors, and heads of student support units have led the implementation

- AY 21-22 created three-year CPI plans
- AY 22-23 reported on first year implementation

CPI Implementation

AY21-22 Plan Highlights

- **SE&D:** Engagement and Development in SL, MVA, CSEE, HEOP
- **CAS:** Summer preparatory course in Chemistry to bridge the gap to college level courses
- **COECS:** Enhanced experiential education to improve career success
- **SArch:** Four initiatives to improve Architecture student success
- **SOM:** Career Building Platform
- **USSA:** Academic Success & Enrichment, Student Success Initiatives, Undergraduate Academic Advising
- **SHP:** Peer tutoring to decrease attrition rate in Physical Therapy

Student Engagement and Development

AY21-22 Plan Highlights

- **Student Life:** Leadership Program, Student Government and Student Conduct
- **Military and Veteran Affairs:** Mentoring Program
- **Career Success and Experiential Education:** Placement numbers and Faculty Relationships
- **HEOP:** Enrollment and Cumulative GPA

Presenters:

Tiffani L. Hinds, Associate Provost for Student Engagement & Development, tblake@nyit.edu

Joanne West, Director Student Engagement and Development Administration and Operations, joanne.west@nyit.edu

Dept. of Biol. and Chem. Sciences

AY21-22 Plan Highlights

- **Need:** Improve our students' experience and success rate in chemistry courses
- **Goal:** Ensure that all students have the same background in basic chemistry before starting college level courses
- **Summer Reactor:** A free 3 week preparatory course for students registered for CHEM 105, 107, or 110
- **Measuring Success:** Pre and post program skills assessment; comparison to national standards; grade tracking; student surveys

CoECS - AY21-22 Plan Highlights

Enhanced experiential education to improve career success

- A major initiative to address this plan was the expansion of the co-op program.
- Initial KPIs:
 - Launch the co-op with 4 UG programs, plan to expand to 6 programs within 2 years
 - Create an advisory board
 - Set up a prep course with CSEE
 - Ramp up co-op positions to 20 within 2 years
 - Plan to expand to graduate programs*
 - Offer co-op positions virtually and out of state*
- Actual Achievements
 - Spring 2022 – 4 UG Programs, 8 students
 - Spring 2023 – 8 UG programs, 20 students
 - Formed a Co-op Advisory Board (13 co-op companies on the board)
 - The prep course is successfully taught by CoECS and CSEE staff
 - Expanded co-op employer partner network to 25+ companies
- Apply Deming's model to create the action plan for implementation
 - Analysis of the practicalities, the two initial KPIs indicated by “*” were redefined:
 - Sufficient time needs to be allocated to a sustainable success and expansion of co-op options for undergraduate programs, therefore plans for graduate programs have been suspended
 - Housing costs presents a challenge to our co-op students in taking out-of-state positions. Employers are not offering much of virtual co-ops, therefore: We are now negotiating a housing allowance with our out-of-state co-op employers, and not asking for virtual positions anymore

CPI Implementation AY21-22 Plan Highlights

SoAD: Four initiatives to improve Architecture student success

1. Survey current student data regarding graduating students, student course evaluation and instructional effectiveness, and verify internship rate.

2. Work with the NYIT Career Service Office to improve student participation to internship workshops, and increase networking opportunities with alumni and local offices. At the same time, organize as we have been doing in recent years, initiatives to help students in familiarizing with the graduate programs offered at NYIT.

3. Continuous improvement and update of software, learning platforms, and digital tools available for faculty and students within our labs and classrooms, to guarantee the access to advanced learning experience and making processes to all students. This will assist them in being professionally and academically more competitive.

4. Promote and facilitate projects of collaboration and integration of curricular and extracurricular activities with local and global communities, academic, administrative, and professional entities.

- K P I S**
- Number of Internships;
 - Survey of student's participation to Workshops;
 - Collection of Alumni and employers' feedback;
 - Understanding of student's satisfaction;
 - Survey of UG students continuing with Grad education at NYIT.

- K P I S**
- Survey of extracurricular activities involving students and faculty;
 - Survey of student's satisfaction;
 - Evaluation of the impact of the student's work on communities.

WORKSHOP: SUSTAINABLE RIO DE JANEIRO



WORKSHOP: BUILDING PUERTO RICO



PARTICIPATION TO THE VENICE ARCHITECTURE BIENNIAL



INTERNATIONAL EXCHANGE AGREEMENT POLIMI



STUDENTS MEET PROFESSOR EMERITUS PETER EISENMAN



STUDENTS MEET AIA EXECUTIVE VICE PRESIDENT



STUDENTS AWARDED AT THE FRIENDS OF SoAD EVENT

SOM: Career Building Platform leads to Student Success

Professional Enrichment
Community Impact
Experiential Education

NEW YORK INSTITUTE
OF TECHNOLOGY

School of Management



Undergraduate Student Success & Advising - AY21-22 Plan Highlights

Academic Success & Enrichment

- Academic Tutoring: Increase the number of tutoring appointments, courses tutored, and distinct tutees; decrease the DFW rates for those who attend tutoring

Student Success Initiatives:

- New York Tech Advance: Increase the number of high school partners, total courses offered, and total student enrollment

Undergraduate Academic Advising:

- Early Alert and Progress Reports: Increase awareness and utilization of early alerts, increase the number of alerts that are successfully closed, increase the response rate of progress reports

Monika Rohde
Senior Associate Dean,
Undergraduate Student Success & Advising
monika.rohde@nyit.edu

From the School of Health Professions: DPT Peer Tutoring Program



NEW YORK INSTITUTE
OF TECHNOLOGY

Mission:

- Our mission is to prepare future physical therapist professionals as clinicians, researchers, and leaders.

Data Collection:

- Attrition rate
- Graduation rate
- NPTE Pass Rate

Data Analysis:

- Attrition for last 5 years by entry date (academic deficiency only) : 2018: 9.5%, 2019: 7.5%, 2020: 14.2%, 2021: 20.5%, & 2022: 18%.

Benefits of Peer Tutoring:

- Less threatening, role models, decreased test anxiety and higher student engagement.

CPI Plan:

- To develop a peer tutoring program

CPI Goals:

- Decrease attrition rates (<10%) due to academic deficiency.
- Improve student success.
- Meet the CAPTE accreditation standard of 80% graduation rate.

Assessment of Initiative:

- Exam grades.
- Student surveys (quantitative data, including details about usage of service).
- Students will complete post-course evaluations of the program, using a 5-point Likert scale and comments for qualitative data collection.

Special thanks to Dr. John Handrakis for piloting this program.

Contact information: Dr. Cheryl Hall: chall@nyit.edu



STANDARDS

Standards for Accreditation and Requirements of Affiliation

The *Standards for Accreditation and Requirements of Affiliation (Fourteenth Edition)* is effective July 1, 2023. Those who entered Self-Study Institute (SSI) on or after fall 2023 will utilize the Fourteenth Edition. Those institutions will host evaluation visits in 2025-2026 and thereafter. Institutions with follow-up actions dated after June 20, 2023, will also use the Fourteenth Edition of the standards for reporting.

The Thirteenth Edition remains in effect for those who entered Self-Study Institute (SSI) before fall 2023. Those institutions will host evaluation visits in 2023-2024 and 2024-2025. Institutions with follow-up actions dated prior to June 20, 2023, will also use the Thirteenth Edition of the standards for reporting.

Institutions should contact their Vice President Liaisons with questions.

FOURTEENTH EDITION

THIRTEENTH EDITION



Revision of MSCHE Accreditation Standards & Guiding Principles

STANDARDS FOR ACCREDITATION AND REQUIREMENTS OF AFFILIATION | FOURTEENTH EDITION

The Fourteenth Edition is effective July 1, 2023. Those who entered Self-Study Institute (SSI) on or after fall 2023 will utilize the Fourteenth Edition. Those institutions will host evaluation visits in 2025-2026 and thereafter. Institutions with follow-up actions dated after June 20, 2023, will also use the Fourteenth Edition of the standards for reporting. Institutions should contact their Vice President Liaisons with questions.

Download the [*Standards for Accreditation and Requirements of Affiliation \(Fourteenth Edition\)*](#).

Download the [*Evidence Expectations by Standard*](#).



<https://www.msche.org/standards/fourteenth-edition/>

Guiding Principles



Five principles guide the analysis in each of the seven standards

1. Application of the Standards within the Context of an Institution's Mission and Goals
2. Centrality of the Student Experience
3. Reflection on Diversity, Equity, and Inclusion
4. Emphasis on Data and Evidence-based Decision-making
5. Innovation as an Essential Part of Continuous Improvement

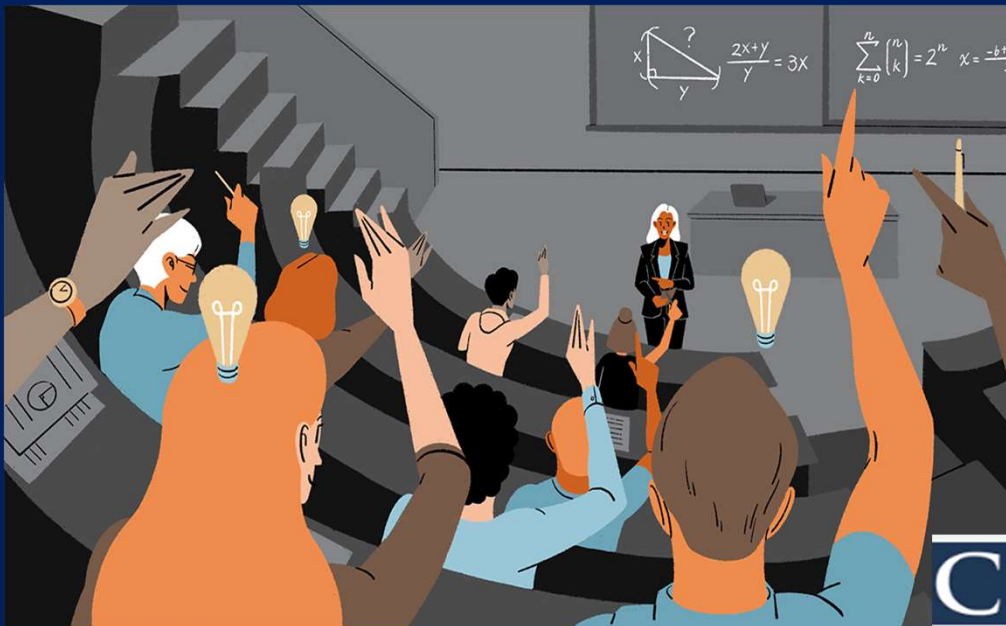
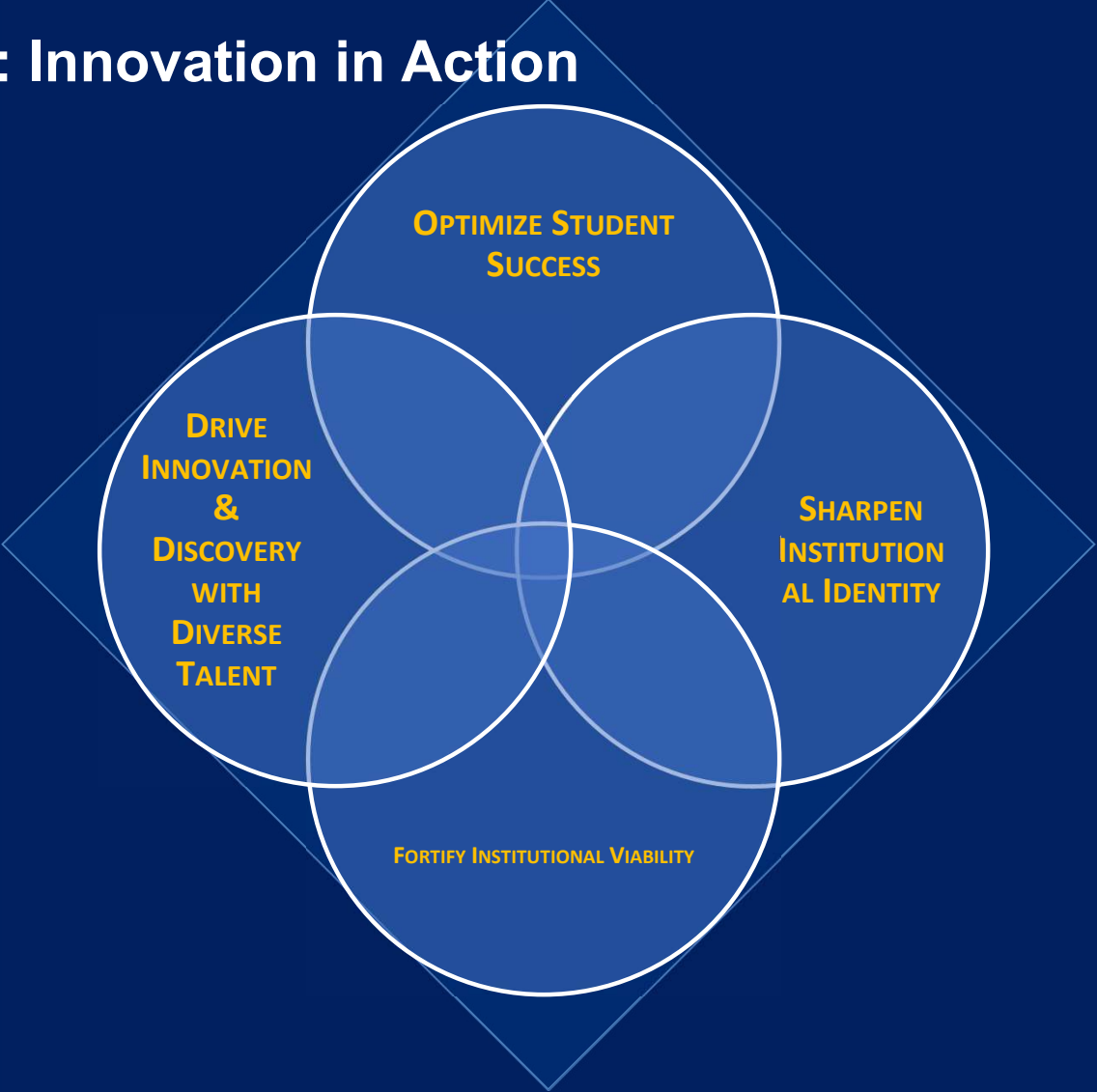


Image credit: Chronicle of Higher Education

Using Data to Support Student Success & Inclusive Excellence

New York Tech: Innovation in Action

Plan Overview



New York Tech: Innovation in Action

Plan Overview



New York Tech: Innovation in Action

Inclusive Excellence

Equity consciousness

“Making equity everyone’s work” American Council on Education (2021)

Using data to inform our decisions and view of success

Exploring key questions:

By what categories do we disaggregate data? To what extent?

How do we interpret and act on findings from the data?

Next steps:

Review key performance indicators (e.g., enrollment, retention, graduation, and student satisfaction) disaggregated on identified categories when appropriate

Using Data to Support Student Success

Faculty Panel

Lori Hochman, Assistant Professor, Physical Therapy

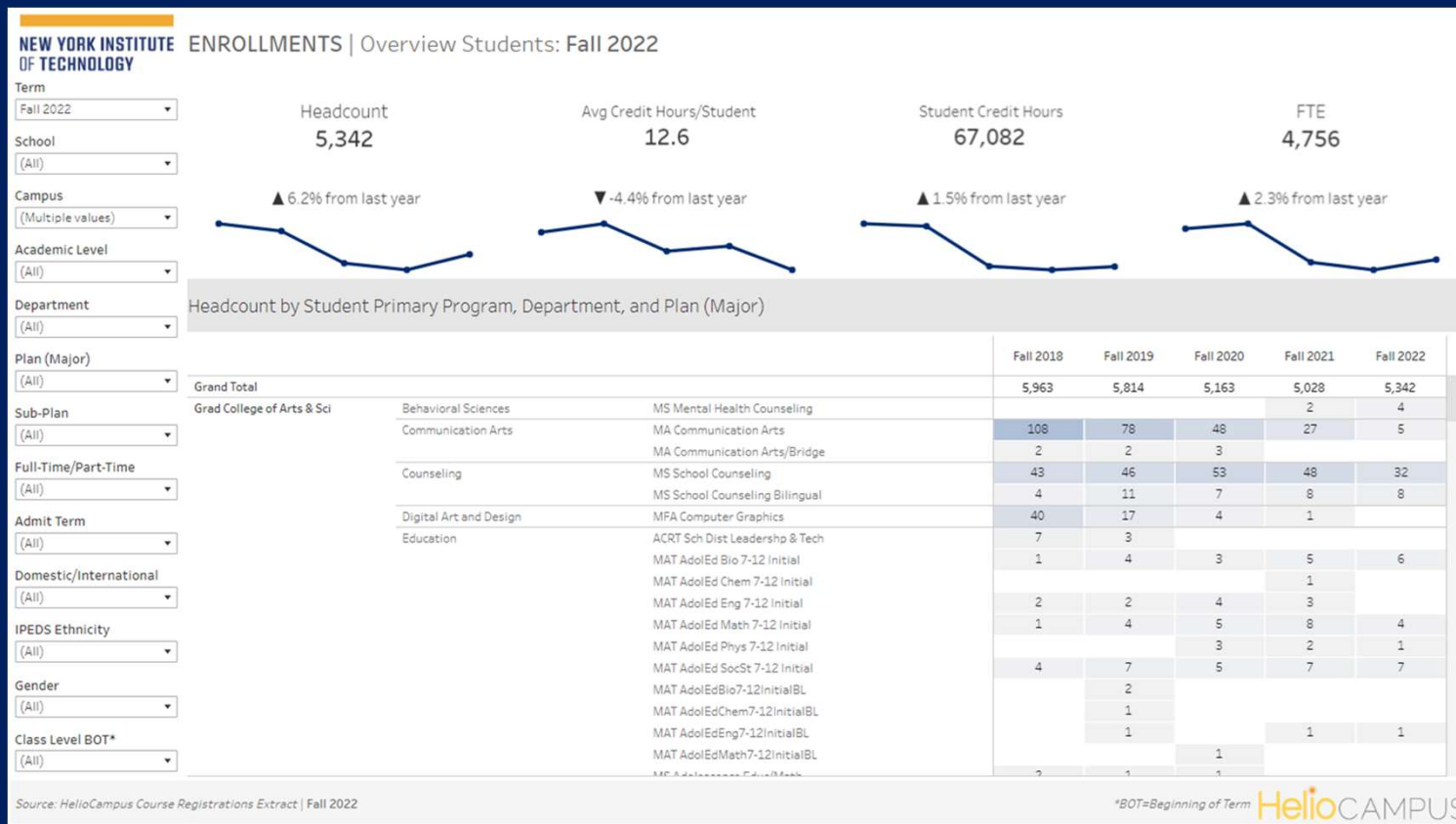
Corri Wolf, Associate Professor, Physician Assistant Studies

Mena Youssef, Assistant Professor, Biological & Chemical
Sciences



Coming Up in AY 23/24

HelioCampus (https://analytics.nyit.edu)



Know Your Students

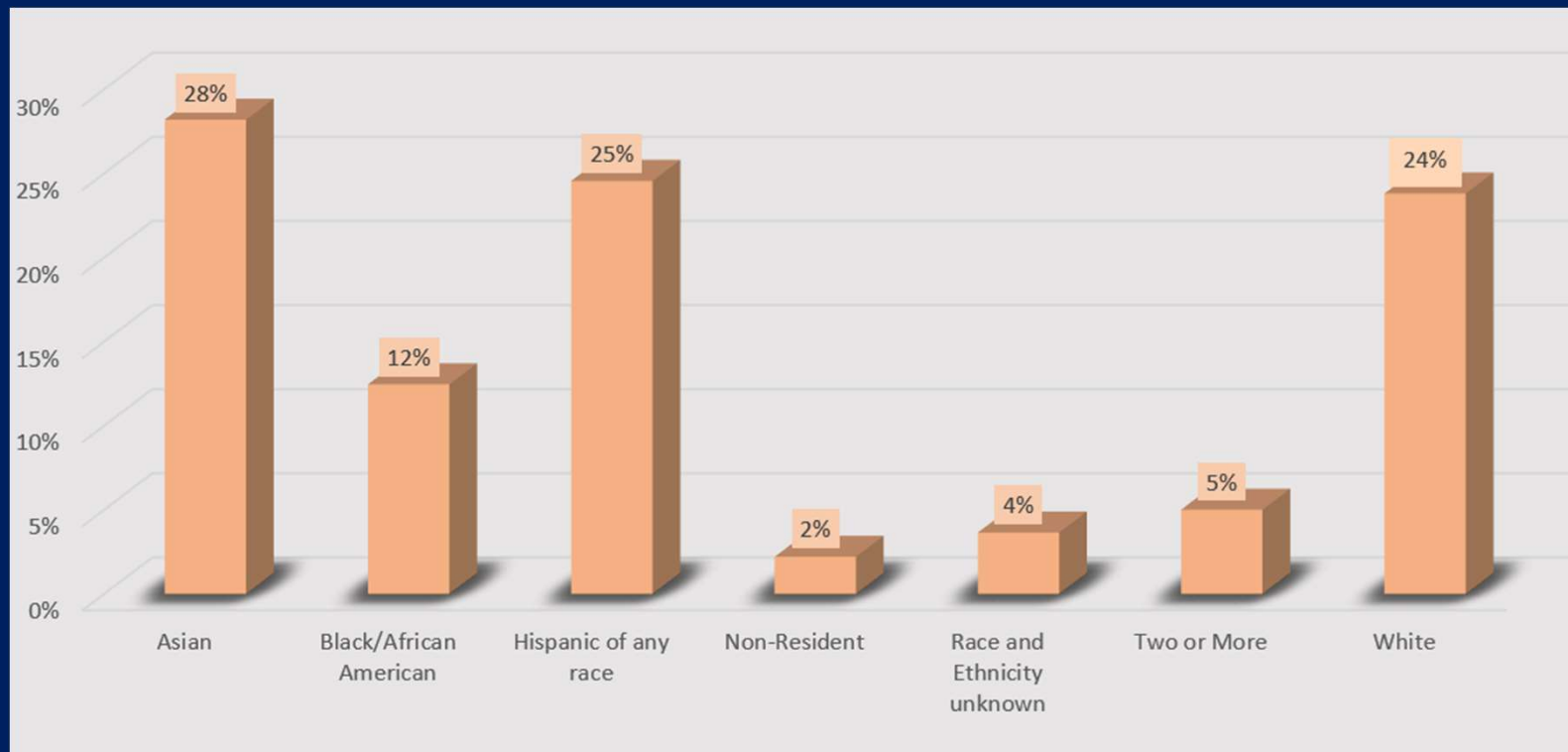
Provides faculty with summary data about the students in their classes compared with historical data

Encourages and empowers faculty to adopt inclusive teaching practices through resources and communities of practices

What data would you like to see in a dashboard about your students?

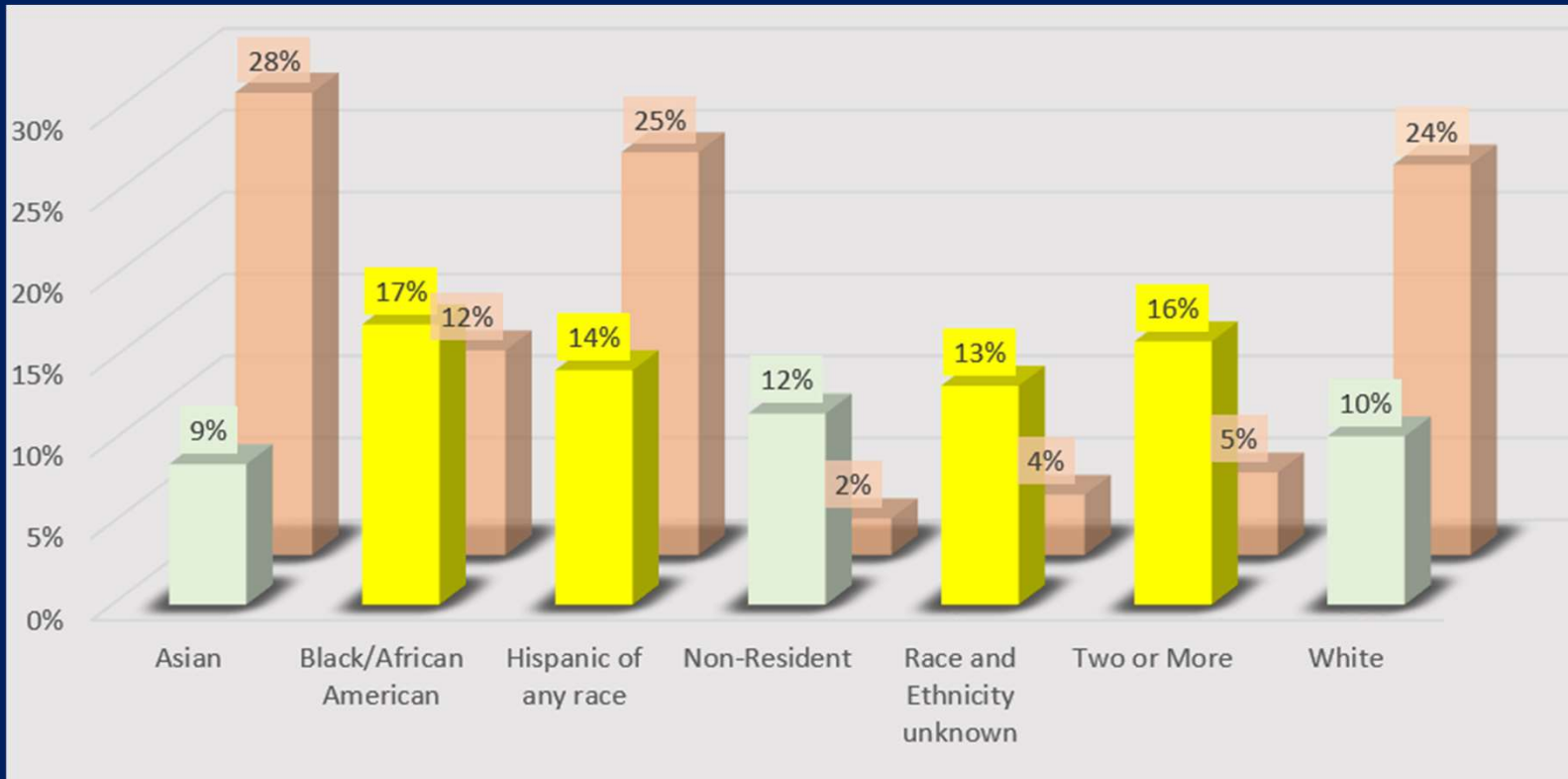
Know Your Students

FCWR-101 course registration by Ethnicity over five years (AY 2018-22)



Know Your Students

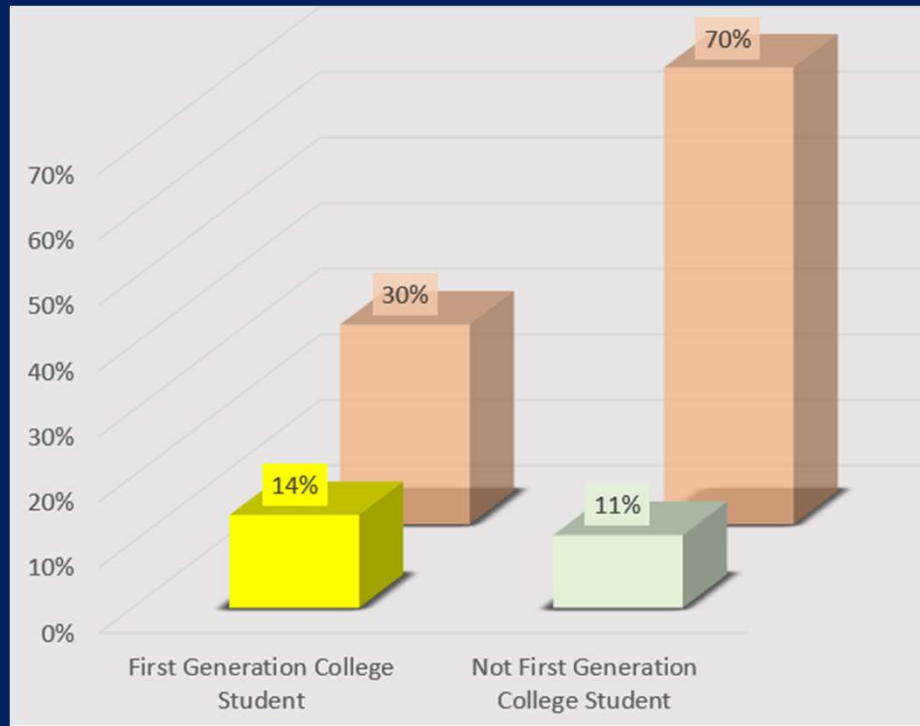
FCWR-101 DFW rate by Ethnicity (Percent of grades that are D, D+, F, IF, W, WF, UW)



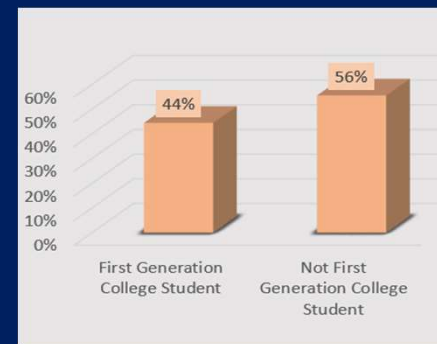
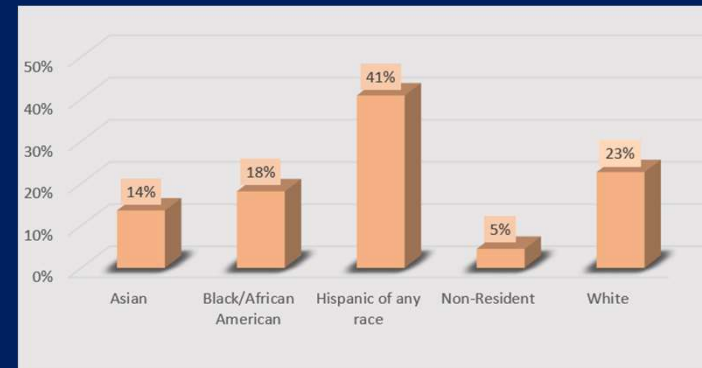
DFW rate above
course average (12%)
DFW rate below
course average (12%)
Percent registrations
by ethnicity

Know Your Students

FCWR-101 DFW rate by FirstGen Status

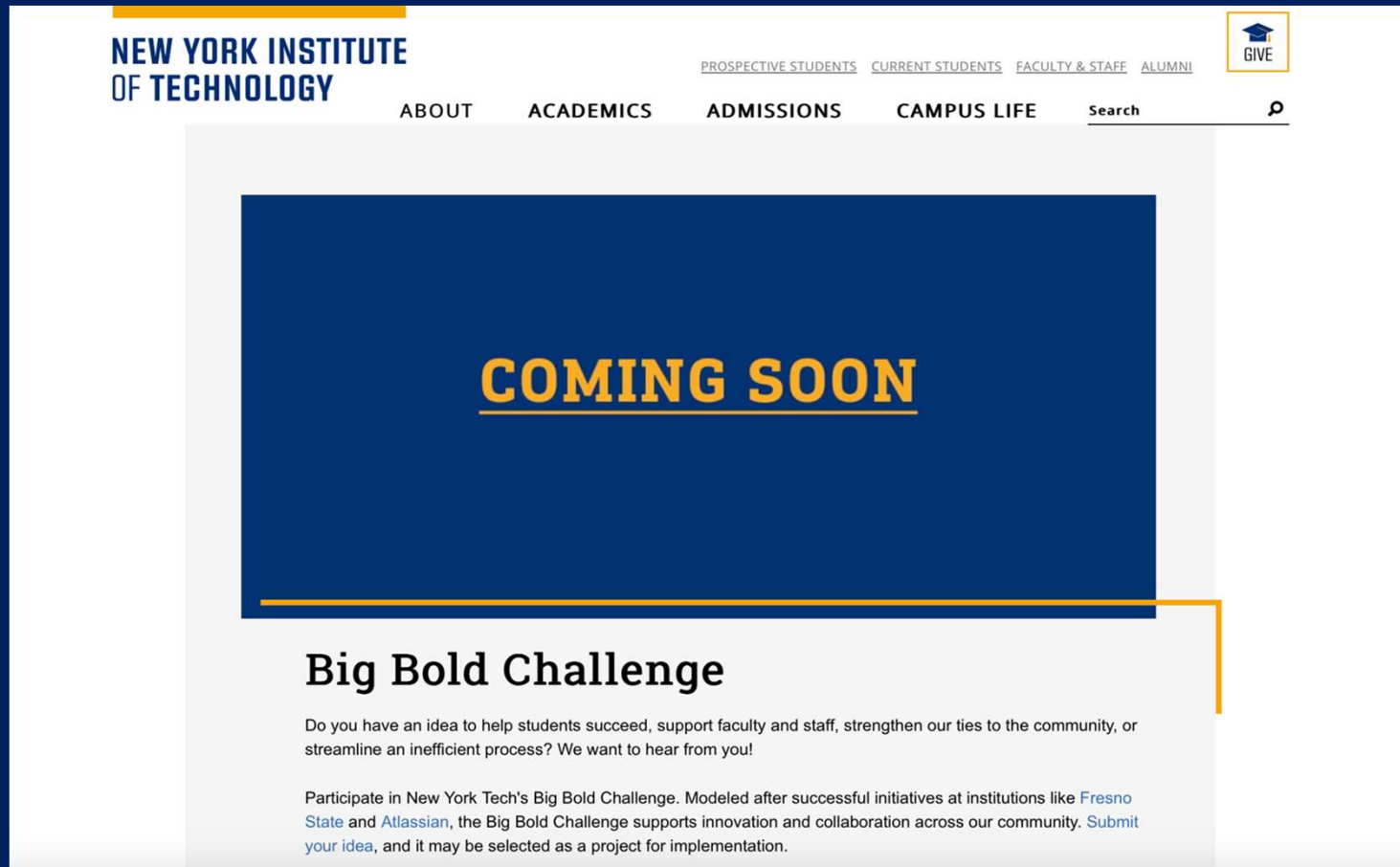


Registration for a Fall 2023 class by ethnicity and First Gen



Big Bold Challenge

NEW YORK INSTITUTE
OF TECHNOLOGY



The screenshot shows the top navigation bar of the New York Institute of Technology website. On the left is the logo "NEW YORK INSTITUTE OF TECHNOLOGY". To the right are links for "PROSPECTIVE STUDENTS", "CURRENT STUDENTS", "FACULTY & STAFF", and "ALUMNI". Further right is a "GIVE" button with a graduation cap icon. Below these are menu items: "ABOUT", "ACADEMICS", "ADMISSIONS", "CAMPUS LIFE", and a "Search" field with a magnifying glass icon.

The main content area features a large blue rectangle with the text "COMING SOON" in bold, orange, sans-serif font. Below this rectangle, the heading "Big Bold Challenge" is displayed in a large, bold, black font. Underneath the heading is a paragraph of text: "Do you have an idea to help students succeed, support faculty and staff, strengthen our ties to the community, or streamline an inefficient process? We want to hear from you!". A second paragraph follows: "Participate in New York Tech's Big Bold Challenge. Modeled after successful initiatives at institutions like [Fresno State](#) and [Atlassian](#), the Big Bold Challenge supports innovation and collaboration across our community. [Submit your idea](#), and it may be selected as a project for implementation."

THANK YOU!!

Do.
Make.
Innovate.
Reinvent the Future.